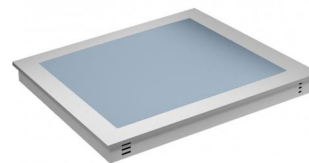


HEATED TOP UNIT IN TEMPERED GLASS DROP-IN - 2 GN

Heating surface in tempered glass, dimension 2 GN 1/1. Independent digital temperature controls, temperature range +30 +100 °C Independent digital temperature controls. Endowed with operating and safety thermostat. Drop-in element to be vertically built in. AISI 304 18/10 stainless steel top, height of protruding part 15 mm, thickness 1 mm.



Capacity 2 GN

Technical Data

<i>Working voltage</i>	230V 1N~ / 50 ÷ 60Hz	<i>Net Weight</i>	32 kg
<i>Gross Weight</i>	35 kg	<i>Electric Power</i>	0,8 kW
<i>Dimensions</i>	82,5x68x14,5 cm	<i>Packing</i>	82x69x32 cm

HEATED TOP UNIT IN TEMPERED GLASS DROP-IN - 2 GN
Self-Service and Drop-in