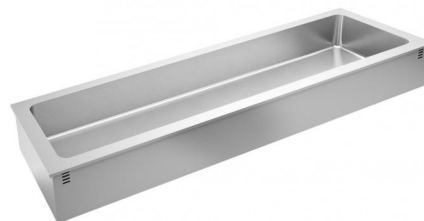


## BAINMARIE WELL DROP-IN - 6 GN

Pressed well 210 mm deep with rounded corners , endowed with bridge-bars to hold containers, capacity n.6 GN 1/1. Water functioning +30 +90 °C; manual loading though the switch on the control board. Independent digital temperature controls. Endowed with operating and safety thermostat. Drop-in element to be vertically built in. AISI 304 18/10 stainless steel top, height of protruding part 15 mm, thickness 1 mm.




---

*Capacity* 6 GN

### Technical Data

<i>Working voltage</i>	400V 3N ~ 50 ÷60 Hz	<i>Net Weight</i>	73 kg
<i>Gross Weight</i>	80 kg	<i>Electric Power</i>	3,9 kW
<i>Dimensions</i>	222,5x68x32 cm	<i>Packing</i>	212x69x50 cm